



# DyFuze<sup>TM</sup>

**AS THE THREAT  
EVOLVES  
SO DO WE**

DATA MANAGEMENT  
MULTILINGUAL  
MOBILE OPERATIONS  
EVIDENCE MANAGEMENT  
ENCRYPTED SECURE DATA  
PRIVATE APN/VPN  
BROAD CUSTOMISATION  
REAL-TIME INSIGHTS  
ADVANCED ANALYTICS  
ON-PREMISES AI  
ENTITY EXTRACTION  
IMAGE EXPLOITATION  
DOCUMENT EXPLOITATION  
FACIAL RECOGNITION  
OBJECT RECOGNITION  
GEOINT/OSINT  
SECURE TRANSMISSION  
DATA EXPORTING  
INTEROPERABILITY



## EXECUTIVE SUMMARY

---

Dfuze Product Suite stands as a premier COTS solution tailored for Law Enforcement, Defence, Intelligence, and International Organisations, since its inception, Dfuze has expanded from supporting counter-IED, EOD, Forensic and C2 communities to being utilised in over 40 countries.

### 🔗 KEY COMPONENTS

#### → **Dfuze Net:**

- Data repository which enhances situational awareness for command centres by integrating and analysing data from multiple sources. Supports decision-making with real-time, actionable insights through efficient data management.

#### → **Dfuze Operator:**

- Empowers field operatives to capture and securely upload media directly at the scene, providing real-time aggregation and analysis.

#### → **Report Desk:**

- Transforms open-source data into actionable intelligence, merging OSINT with advanced AI to offer unmatched clarity and speed of reporting.

### 🔗 BENEFITS

#### → **Proven Pedigree:**

- Trusted in over 40 countries, reflecting deep understanding and leadership in the field.

#### → **Versatility and Scalability:**

- Tailor databases, interfaces, and workflows to meet specific operational needs.

#### → **Operational Efficiency:**

- Streamlines data management from collection to dissemination.

#### → **Enhanced Situational Awareness:**

- Provides real-time insights for effective decision-making.

#### → **Advanced Analytics:**

- Includes media exploitation, geospatial analysis, and integration with Microsoft Office products.

### 🔗 APPROACH

Our methodology involves capturing, storing, searching, analysing, visualising, and disseminating data efficiently and securely. The Dfuze Product Suite utilises AI, image exploitation, and geospatial analysis to deliver robust data management solutions, which can be deployed on-premises to ensure the highest levels of data security.

### 🔗 CASE STUDIES

Dfuze has become the global standard for IED, EOD, CT, law enforcement, forensics and private security operations. It is renowned for promoting cooperation and intelligence sharing among agencies, ensuring data sovereignty and control over information sharing without compromising their systems.

### 🔗 CONCLUSION

The success of Dfuze stems from our vision of delivering the right data to the right people at the right time. Our customer-centric approach, combined with the expertise of our SMEs, ensures that our solutions meet current needs and anticipate future challenges.

## OVERVIEW

---



With over two decades of experience, ISS Global's Dfuze Product Suite stands as a premier COTS solution tailored for Law Enforcement, Defence, Intelligence, and International Organisations. Since its inception in 1999, Dfuze has expanded from supporting counter-IED, EOD, and C2 communities to being utilised in over 40 countries, demonstrating our proven expertise in data management and operational support.

### RIGHT INFORMATION, RIGHT PLACE, RIGHT TIME

The Dfuze Product Suite is an Intelligence Management System that handles data securely and efficiently across various platforms, supporting data collection, storage, access, analysis, visualisation, and sharing. It adapts to cloud-based, on-premises, and standalone systems, addressing 'data flow' issues and ensuring seamless data integration and advanced fusion capabilities including geospatial analysis, dashboarding, media exploitation and on-premises state of the art AI providing advanced analytics enabling complex decision-making.



### KEY COMPONENTS

#### ✓ Dfuze Net:

Enhances situational awareness for command centres by integrating and analysing data from multiple sources. It supports decision-making with real-time, actionable insights through efficient data management, ensuring effective report production and dissemination for critical missions.



#### ✓ Dfuze Operator:

Dfuze Net in the palm of your hand, empowering field operatives to capture and upload media from smart devices directly at the scene to operations centres for real-time aggregation and analysis.



#### ✓ Report Desk:

Dfuze and Report Desk transforms open-source data into actionable intelligence, distinguishing truth from falsehood. These platforms verify data and provide structured insights to bolster decision-making and combat misinformation. By merging OSINT with advanced AI, they offer unmatched clarity, transforming data into a crucial asset for security and innovation.

ReportDesk



## BENEFITS

Feature	Description
Proven Pedigree	Leveraging over 20 years of expertise, Dfuze is a trusted solution in over 40 countries, reflecting our deep understanding and leadership in this space.
Comprehensive Versatility and Scalability	Users can tailor databases, change native language, interfaces, workflows, and advanced capabilities to meet specific operational needs. Designed to address the diverse and evolving requirements of various organisations.
Operational Efficiency	Streamlines data management processes, ensuring secure and efficient handling from collection to dissemination.
Enhanced Situational Awareness	Provides real-time insights crucial for effective decision-making.
Advanced Analytics	Media exploitation, geospatial analysis, dashboarding and statistics, advanced reporting, output and integration with supported Microsoft Office products.
On-Premises AI Integration	On-premises AI is crucial to the Dfuze Program as it ensures data security and compliance with strict operational protocols, enabling advanced analytics and real-time insights without relying on external networks. This capability enhances decision-making, operational efficiency, and responsiveness in critical mission environments.

## CONCLUSION

The Dfuze success stems from our vision of delivering the right data to the right people at the right time. Our customer-centric approach and expert SMEs ensure solutions meet current needs and anticipate future challenges. Collaboration with users keeps Dfuze at the forefront of technological advancements.

We are renowned for our comprehensive and adaptive solutions, developed with profound operational insight. As technology and requirements evolve, we remain steadfast in supporting our customers with innovative and effective solutions. Organisations continue to choose ISS Global for its unmatched expertise and the reliable performance of the Dfuze Product Suite.

## BACKGROUND

*“ISS Global had the privilege of collaborating with the UK's New Scotland Yard (NSY) and the US Bureau of Alcohol, Tobacco & Firearms (ATF) to develop a system for storing, searching, and analysing decades of unstructured bomb data. This esteemed partnership led to the creation of the Dfuze Enterprise solution, which cross-references and aggregates past and present incident data, providing critical insights into new incidents, identifying patterns, and enabling secure information sharing between different organisations, both domestically and internationally, while adhering to respective technological and policy constraints.”*



As needs evolved, Dfuze Enterprise continuously refined its architecture and capabilities to address information management and data-sharing challenges faced by over 40 countries. The success of Dfuze Enterprise spurred demand for enhanced data-sharing and collaboration. In response, ISS Global transformed it into Dfuze Net, a live information management system that retained all previous functionalities while enabling secure intranet data access and sharing among users and organisations.

Building on our privileged position to work with such esteemed agencies, ISS Global developed Dfuze Mobile Operator. This solution equipped field personnel, such as Crime Scene Investigators, with tools to capture and share media-based evidence and draft reports during incidents like terrorist attacks. This allowed for the swift aggregation of data from multiple sources, providing timely, incident-specific information to analysts and decision-makers.

To further enhance our capabilities, we have integrated emerging AI technologies for prediction and trend analysis, enabling the identification of patterns and

providing advanced insights into potential future incidents. This use of AI helps in anticipating and mitigating security threats more effectively.



Leveraging insights from our partners' operational requirements and the expertise of subject matter experts (SMEs), ISS Global continually seeks innovative methods to enhance the Dfuze Product Suite. This commitment ensures the development of new solutions, capabilities, and features to support both existing and potential partners facing evolving security challenges. Our dedication to integrating cutting-edge technologies underscores our role as a trusted collaborator in developing fit-for-purpose tools to address modern security threats.

## OUR APPROACH

### “THE RIGHT INFORMATION, THE RIGHT PLACE, THE RIGHT TIME”

Category	Description
Methodology	ISS Global recognises that all organisations depend on data and require efficient, secure methods for data management. Our methodology for the Dfuze Product Suite involves capturing, storing, searching, analysing, visualising, and disseminating data through streamlined processes designed to address both common and unique data challenges.
User-Centric Design	Our vision for the Dfuze Product Suite centres on understanding and integrating user needs. We actively seek and incorporate feedback from our users to ensure that our solutions are tailored to meet their specific operational requirements, enhancing usability and effectiveness.
Collaboration and Partnerships	We build strong partnerships with industry experts, technology providers, and our customers. This collaborative approach ensures that we deliver solutions that are not only technologically advanced but also grounded in real-world operational needs.
Technology and Innovation	The Dfuze Product Suite leverages cutting-edge technologies such as AI, machine learning, and geospatial analysis to provide robust data management solutions. Our innovative approach ensures seamless integration with existing systems and platforms, enhancing the overall efficiency of data operations.
Customisability	Our solutions are highly customisable, allowing organisations to tailor the Dfuze Product Suite to their specific needs. This includes bespoke databases, user interfaces, data workflows, and advanced capabilities such as geospatial analysis, dashboarding, image exploitation, and chain of evidence management.
Data Management	We prioritise secure and efficient data management, covering all aspects from collection (media and documents) to storage, analysis, record creation, report management, and dissemination. Our approach ensures that relevant data is readily available to support situational awareness and decision-making.
Implementation and Support	We provide comprehensive support for the deployment of the Dfuze Product Suite, including training and resources to ensure effective implementation. Our commitment extends to ongoing support and updates, helping organisations adapt to evolving needs and challenges.
Performance Monitoring and Evaluation	Our performance metrics and KPIs are designed to measure the effectiveness and impact of the Dfuze Product Suite. Regular evaluations and reviews ensure that our solutions continue to meet organisational needs and perform optimally.
Scalability and Futureproofing	The Dfuze Product Suite is designed to scale with growing organisational needs. Our future-proofing strategies ensure that our solutions remain relevant and effective, with plans for continuous enhancements and updates.
Conclusion	Through the Dfuze Product Suite, ISS Global delivers comprehensive and user-customisable solutions that address unique challenges. Our focus on strong partnerships and innovative technologies ensures that we provide the right data, to the right people, at the right time.

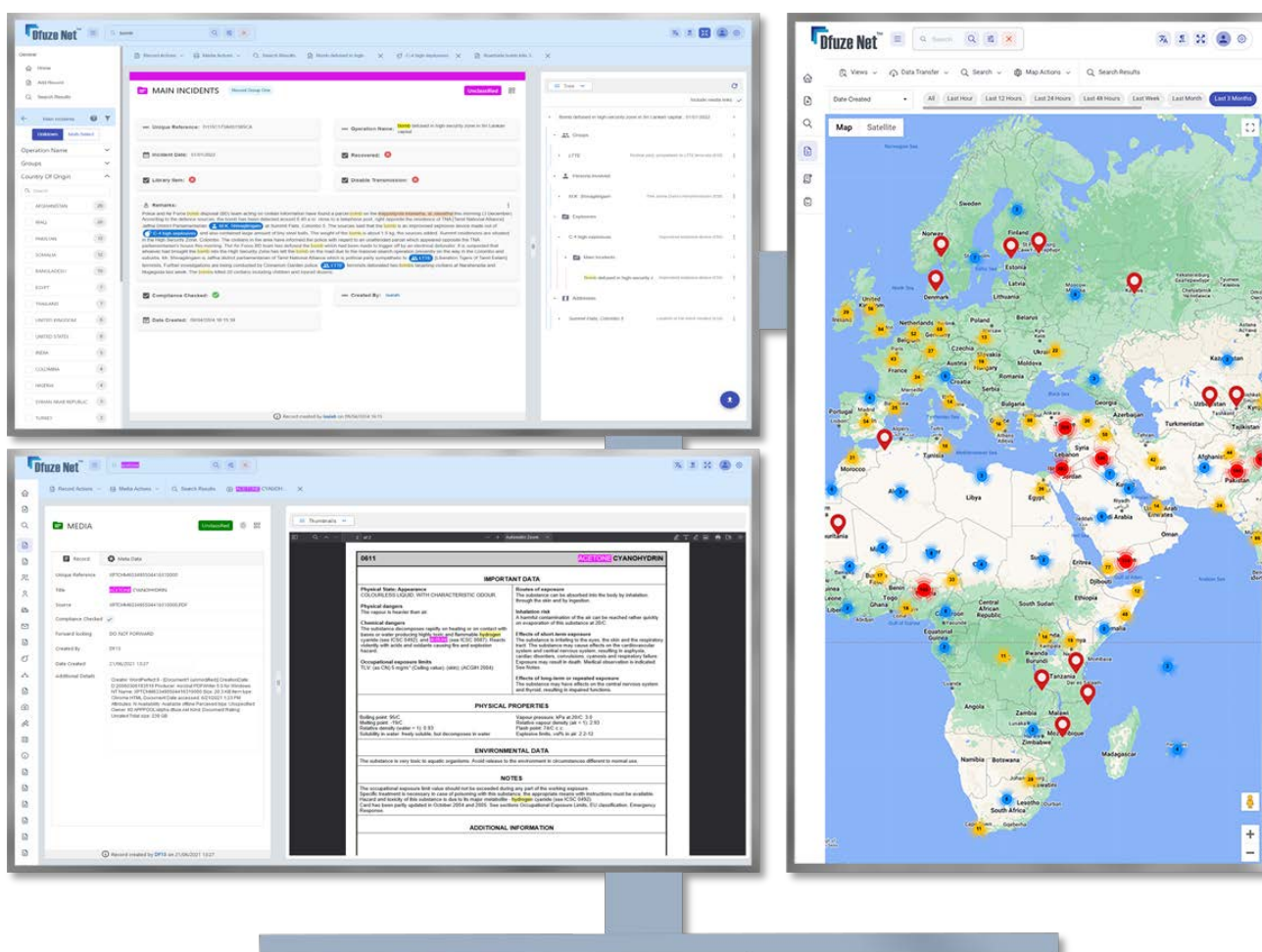
# DFUZE NET

## PRODUCT OVERVIEW

Dfuze Net is a cutting-edge software solution designed to facilitate seamless communication and collaboration between departments, or teams involved in national security and law enforcement.

With its focus on security, interoperability, scalability, customisability, innovation, agility, transparency, and efficiency, Dfuze Net is an indispensable tool, helping you to stay ahead of emerging threats and technologies.

By leveraging the power of Dfuze Net, your organisation can enhance its operational capabilities, maintain trust and confidence among stakeholders, and ultimately contribute to a safer and more secure world.



## 🔗 CAPABILITIES



- ✓ Database entries are relevant – All Fields (taxonomies) designed by Subject Matter Experts.
- ✓ Fields are customisable and translate to other languages.
- ✓ Customise the mandatory fields to enhance reporting.
- ✓ Enforce pick lists to ensure data that is entered is valid.
- ✓ Enhances information gathering with data from any source, in any electronic document format, including photos, MS Windows document formats, Adobe File Formats, Spreadsheets.
- ✓ Photographic enhancement and measurement tools to glean additional insights from photographic evidence
- ✓ Create complex associations and link intelligence
- ✓ Create and maintain Reference Libraries and repositories for open-source information

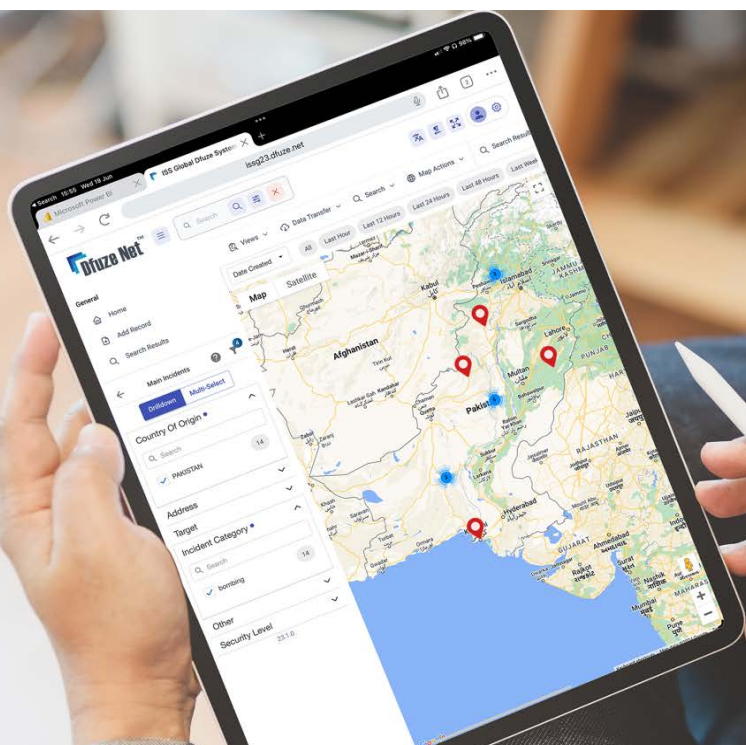
## 🔗 SECURITY

- ✓ You maintain data sovereignty.
- ✓ All data can be stored on premises within your own exclusive system.
- ✓ Customisable security for users (Read, Write, Transmit, Print, User Groups)
- ✓ Access to records based on user permissions and categories in a hierarchical structure
- ✓ Adjustable password rules to match internal IT Security Policy
- ✓ Dfuzer® is compatible with file systems that use encryption.
- ✓ Supports multi factor authentication



## 🔗 MULTILINGUAL

- ✓ Dfuzer® is designed to support all known languages.
- ✓ All field names can be translated by YOU.
- ✓ Right to left character sets are supported.
- ✓ The entire User Interface can be configured in the Host Language.
- ✓ Multiple languages can be utilised within the same network.



## SEARCHING

- ✓ Quick search allows rapid retrieval of any data.
- ✓ Advance search utilises sophisticated logic to search through all the data that is accessible.
- ✓ Dfuzze Prospect Utility - searches structured and unstructured data (documents, PDF, Word, PowerPoint, Excel, etc) in detail.
  - Logical operators can be used easily.
    - Exact
    - Contains
    - Does not contain
    - Starts With
    - Ends With
  - Wild Cards
  - Date Ranges
  - Number Ranges
- ✓ Prospect is supplied with a unique set of tools including.
  - Fuzzy Search
  - Phonic Search
  - Synonym Search
  - Stemming
  - Proximity Searching
  - Highlights discovered content
  - Google style search returns

## REPORTING



- ✓ Generate a Report on the activities of a specific group or individual
- ✓ Generate Linked Reports from Multiple Individual Databases – such as People, Groups, Components, Firearms, Media
- ✓ Identify “signature” components from your analysis of recovered items
- ✓ Examine a profile of the activities of the group or individual
- ✓ Generate a detailed report that includes a Custom 3D Chart to further illustrate the findings
- ✓ Export reports to popular Microsoft and other platforms for editing and customising.

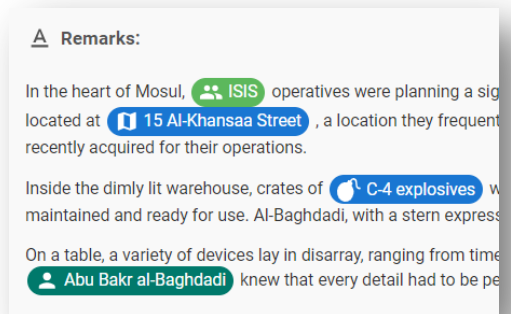


## DRAG AND DROP

- ✓ Drag images and files to your records to link and capture a copy of the data for exploitation.
- ✓ Retains the folder structure of the files you created in explorer.
- ✓ Once material is captured it is made available for data mining and entity extraction.
- ✓ All metadata is also captured for interrogation.

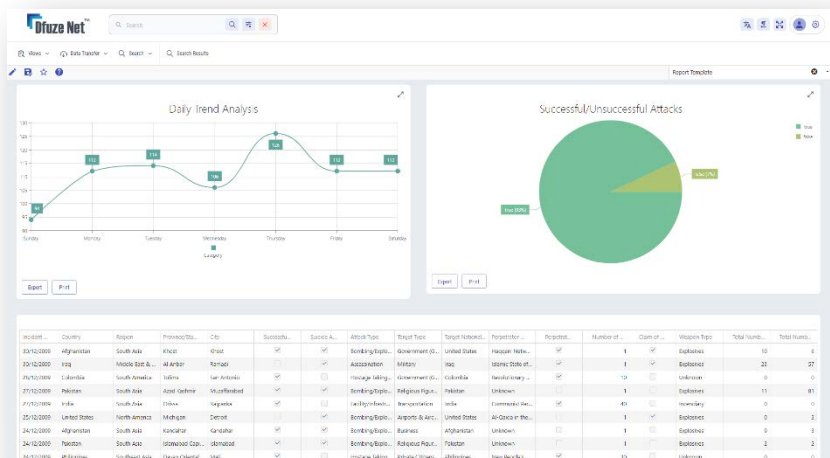
## ENTITY EXTRACTION

- ✓ Retrieve author sentiment from large masses of documents
- ✓ Obtain entities from documents (Names, Places, Objects)
- ✓ Highlight documents that are of interest for further human analysis
- ✓ Allows the ability for entities to be created automatically in Dfuzer®
- ✓ Links can be created within Dfuzer® from entities found in documents
- ✓ Documents can be rated in order of relevance by themes or polarity
- ✓ Multi-lingual



## ANALYSIS

- ✓ Drill down through intelligence for analysis and research
- ✓ Detecting trends and analysis of characteristics
- ✓ Create charts and graphs from all available data
- ✓ Produce media rich and accurate details
- ✓ Produce charts across multiple databases to provide more detailed information

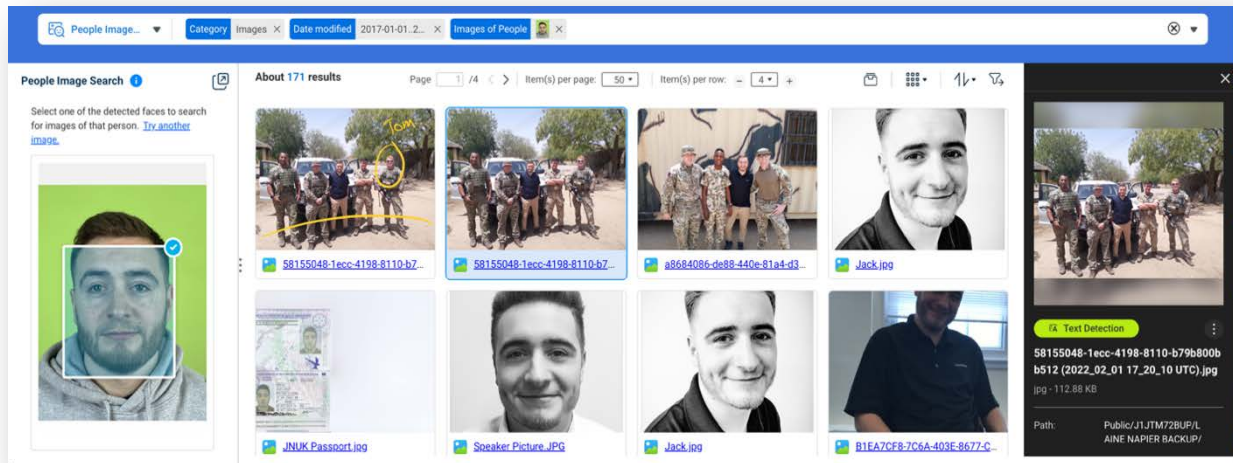


## BAR AND QR CODING



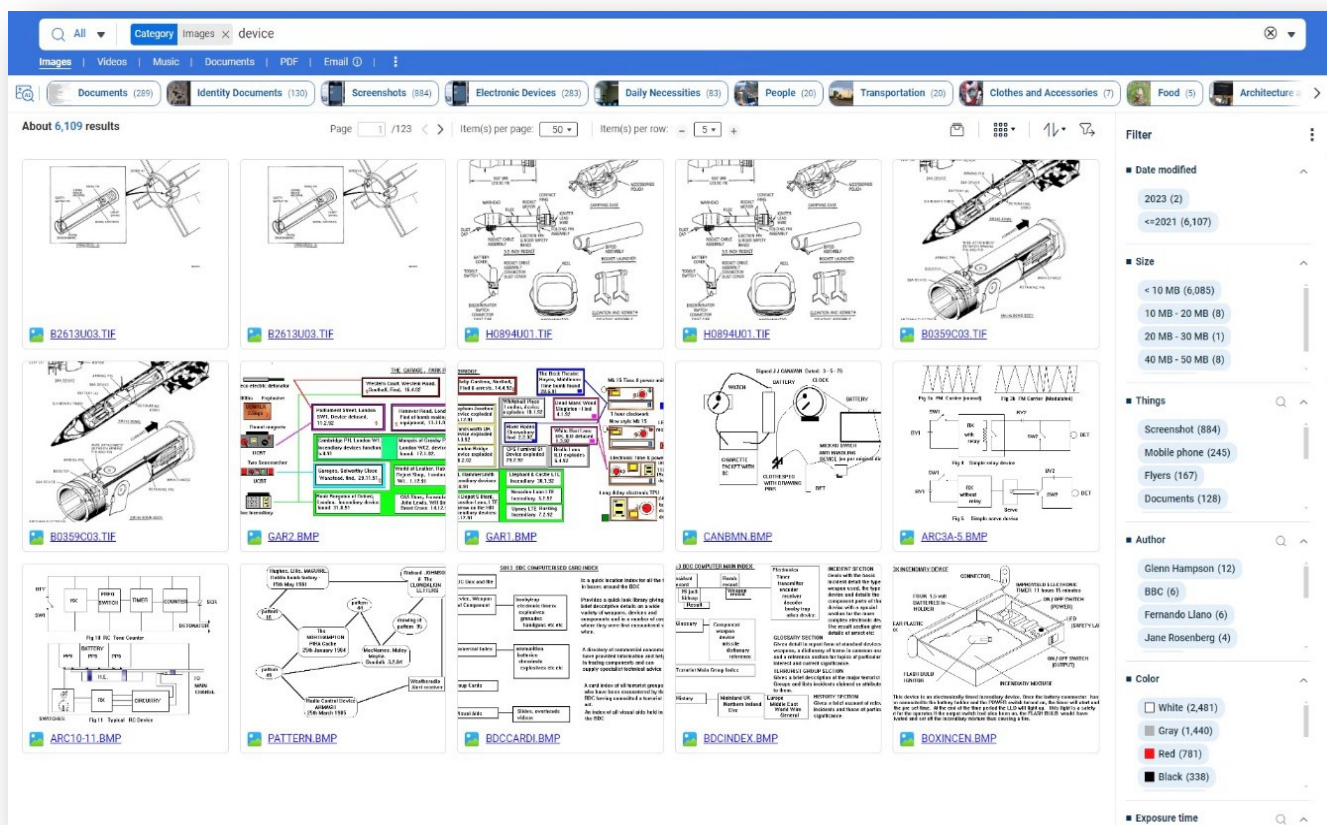
- ✓ Reports can include barcodes for any or all entities within the report.
- ✓ All entities within Dfuzer are barcoded using their Unique Reference Number (URN).
- ✓ Barcode scanner can be used to locate an entity within Dfuzer by scanning the related barcode.
- ✓ Individual barcode labels can be produced for evidence tracking purposes.
- ✓ Reports can be printed or saved to file in several formats (PDF, RTF, text etc).
- ✓ Existing barcodes can be captured and stored.

## FACIAL RECOGNITION



- ✓ **Automatic Face Recognition:**
  - The system automatically detects and recognises faces in photos, organising them based on the individuals detected.
- ✓ **Grouping and Tagging:**
  - It groups photos by recognised faces and allows users to manually tag and name individuals for better organisation.
- ✓ **Search Functionality:**
  - Users can search for photos based on identified faces, making it easy to find all photos of a particular person.
- ✓ **AI-Powered Identification:**
  - Advanced AI algorithms enhance the accuracy of facial recognition, improving over time as more photos are processed.
- ✓ **Privacy and Security:**
  - Facial recognition data is kept secure and private, ensuring that users' personal information is protected.
- ✓ **Customisation Options:**
  - Users can manage and customise face recognition settings, including the ability to merge or split face groups.
- ✓ **Integration with Other Features:**
  - Seamlessly integrates with other photo management features like photo tagging, album creation, and sharing.
- ✓ **Notification System:**
  - Notifies users when new faces are detected, allowing them to quickly review and tag these photos.
- ✓ **Cross-Device Syncing:**
  - Recognised faces and tagged photos sync across multiple devices, providing a consistent experience on different platforms.
- ✓ **Performance Optimisation:**
  - Optimised for performance to handle large photo libraries efficiently, ensuring quick processing and minimal delays.

## OBJECT RECOGNITION



Object recognition allows the system to automatically detect and identify various objects within documents and images, enhancing the searchability of content.

Faceting enables users to filter search results based on specific attributes or categories, such as file type, date, and metadata, making it easier to locate relevant information.

The system supports advanced search queries with Boolean operators, allowing for more precise and targeted searches.

Users can preview search results with highlighted keywords, providing a quick overview of the relevant content.

The interface is designed for ease of use, with intuitive navigation and customisable search options to suit individual preferences.

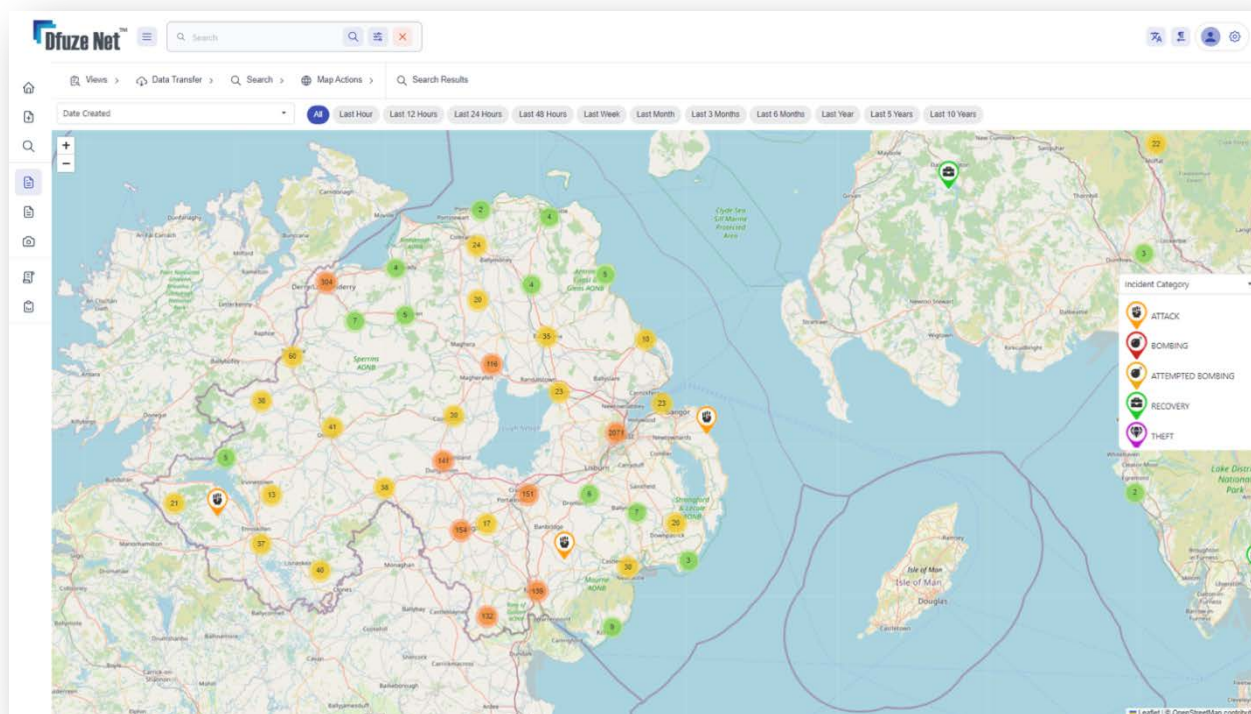
Integration with other tools enhances the overall user experience, allowing seamless access to related applications and features. Performance is optimised to handle large volumes of data efficiently, ensuring quick and accurate search results.

Security features ensure that search data remains private and protected, maintaining user confidentiality.

Customisation options allow users to tailor the search experience to their specific needs, including the ability to save search preferences and create personalised filters.

Cross-device compatibility ensures that users can access and manage their searches from various devices, providing a consistent experience across different platforms.

## GEOINT



In modern intelligence, precision and accuracy are crucial. Geospatial Intelligence (GEOINT) enhances the effectiveness of any Intelligence Handling System by providing detailed spatial data.

- ✓ **Enhanced Analysis**
  - By adding a spatial dimension to data analysis, GEOINT helps identify patterns and trends, crucial for predicting threats and planning operations.
- ✓ **Real-time Intelligence**
  - GEOINT enables access to real-time geospatial data, allowing rapid response to dynamic situations and supporting timely decision-making.
- ✓ **Precision Targeting**
  - Accurate geospatial information is vital for targeting and mission planning, ensuring effective resource deployment and mission success with minimal risk.
- ✓ **Integrative Approach**
  - Combining GEOINT with other intelligence disciplines creates a holistic view of the operational landscape, enhancing overall intelligence quality and reliability.
- ✓ **Strategic and Tactical Advantages**
  - GEOINT supports both long-term strategic planning and immediate tactical needs, providing significant advantages at all levels of operations.
- ✓ **Futureproofing**
  - As technology evolves, GEOINT adapts, integrating with AI and machine learning to keep intelligence systems future-proof and competitive.

In summary, GEOINT is a fundamental element of a robust Intelligence Handling System, offering precise and actionable information for comprehensive analysis, strategic planning, and operational excellence.

## TRANSMISSION AND SHARING

- ✓ Configure trusted users with this capability.
- ✓ Secure 256-bit data Encryption, configurable up to 1024 bits.
- ✓ Data Compression option to maximise low bandwidth situations
- ✓ Protect sensitive data from inadvertent transmission
- ✓ Ensure you retain ownership and control of your intelligence
- ✓ Manage Complex Intelligence Audit Tracking
- ✓ Protect sensitive data by disabling the transmission of individual records
- ✓ Compliance Module assures the quality and accuracy of imported data sets
- ✓ Audit tracking assures that you always know when and where your data is being sent and by whom.
- ✓ Detailed information can be securely sent and received that correlates groups, suspects, incidents, components, firearms and more
- ✓ Share information and build comprehensive individual databases for People, Groups, Components, Firearms and more
- ✓ Secure and Differential Data Dump capability for Disaster Recovery or creating deployable laptop instances of required data.

## EXPORTING

- ✓ Configure trusted users with this capability.
- ✓ Export individual records with detailed information.
- ✓ Include related links and media optionally.
- ✓ Export search results in various formats:
  - Data Transmission (Dfuze-compatible)
  - Excel
  - PDF
  - KML
- ✓ Export full databases, new or updated data, or complete system data.
- ✓ Export Customised Databases
- ✓ Include additional data options:
  - Links to other databases or media
  - Non-compliant records
  - Transmission-disabled records
  - Restricted records
- ✓ Monitor export progress.
- ✓ Download completed exports.



## IMPORTING DATA

### ✓ Dfuze Transmission Import

- Import Customised databases
- Map fields from Transmission File to database
- Create new fields during import
- Set security levels for imported data
- Assign imported data to record groups
- Add records as compliant
- Overwrite existing records
- Monitor Import progress



### ✓ Excel Ingestion

- Import data from Excel spreadsheets (.xlsx)
- Use existing ingestion templates
- Configure options for ignoring specific lines and handling multiple media
- Map spreadsheet data to Dfuze fields
- Import data into multiple databases
- Aggregate multiple rows into the same field
- Automatic smart match of data fields
- Create new fields from spreadsheet columns
- Check for potential duplicates
- Link imported data to existing records
- Manage media imports
- Validate data for consistency

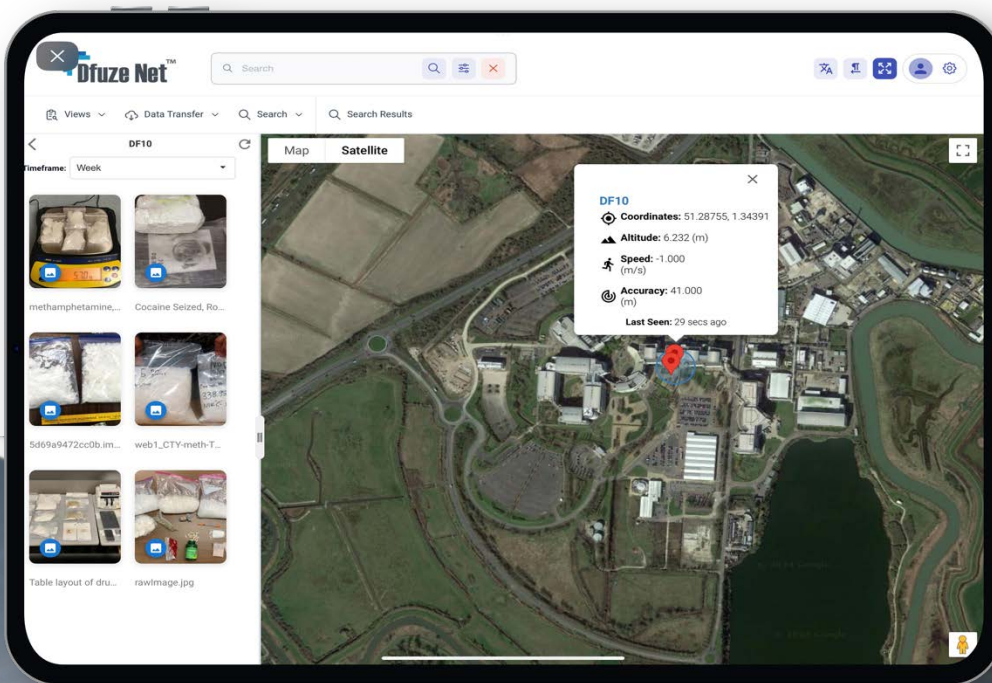


## 🔗 BUSINESS CONTINUITY AND RESILIENCE

- ✓ Scalable backup scenarios deployed globally
- ✓ Disaster recovery options
- ✓ Dfuze databases exist holding 1,000,000+ records

## 🔗 COMMAND CONTROL

- ✓ Geographically monitor your assets in real time
- ✓ Receive and send data instantly to and from ground operations
- ✓ Share data between operatives on the ground
- ✓ Provide data support to assets in theatre
- ✓ Offer scene monitoring in a variety of locations.
- ✓ \*Requires deployment of Dfuze® Mobile Units (GPS enabled PDA, GPS enabled laptops).



## AGILE TAXONOMIES (USER DATABASES)

Dfuze is a dynamic framework, new databases utilising your taxonomy can be added to create a customisable application for your Organisation taking advantage of the cutting-edge business tools offered for the exploitation of data.

- ✓ INCIDENTS
- ✓ GROUPS
- ✓ PEOPLE
- ✓ INFORMATION REPORTS
- ✓ ADDRESSES
- ✓ VEHICLES
- ✓ FIREARMS
- ✓ EQUIPMENT USED (ROBOTS, DISRUPTORS, X-RAY, etc)
- ✓ DEVICES
  - DEVICE TYPE
  - EXPLOSIVES
  - INITIATION SYSTEM
  - DETONATORS
  - ORDNANCE
  - EXPLOSIVES
  - POWER SOURCE
  - COMPONENTS
  - CHEMICALS (HAZMAT, RECIPE)
  - CBRN
  - RENDER SAFE PROCEDURE
- ✓ INVESTIGATIVE ASSISTANCE
- ✓ ACCOUNTS
- ✓ FINGERPRINTS
- ✓ COMMUNICATIONS
  - TELECOMS
  - WEBSITES
  - RF SIGNALS
- ✓ PUBLICATIONS
- ✓ OSINT
- ✓ DIGITAL MEDIA : IMAGERY, VIDEO, AUDIO, PDF, OFFICE FILES



CATEGORIES CAN BE ADDED EASILY TO SUIT THE CUSTOMER.

Manage Databases						
Click on a cell to begin editing its value. Once done, select 'Save Databases' to save your changes. To add a new database, select 'Add Custom Database'						
	English Name	Translation	Default Sort Field	Default Sort Direction		
⋮	Main Incidents	مسرّح الجريمة	Internal System ID	Descending	Edit Fields	Edit... Delete
⋮	Groups	مجموعات	Internal System ID	Descending	Edit Fields	Edit... Delete
⋮	Persons Involved	الأشخاص المشاركون	Internal System ID	Descending	Edit Fields	Edit... Delete
⋮	Addresses	عناوين	Internal System ID	Descending	Edit Fields	Edit... Delete
⋮	Communications	مجال الاتصالات	Internal System ID	Descending	Edit Fields	Edit... Delete
⋮	Vehicle	مركبة	Internal System ID	Descending	Edit Fields	Edit... Delete
⋮	Letter / Parcel	بريد إلكتروني / جزء	Internal System ID	Descending	Edit Fields	Edit... Delete
⋮	Pipe	يضع	Internal System ID	Descending	Edit Fields	Edit... Delete
⋮	Detonators	صواعق	Internal System ID	Descending	Edit Fields	Edit... Delete
⋮	Explosives	متفجرات	Internal System ID	Descending	Edit Fields	Edit... Delete
⋮	Ordnance	معدات حربية	Internal System ID	Descending	Edit Fields	Edit... Delete
⋮	Power Source	مصدر الطاقة	Internal System ID	Descending	Edit Fields	Edit... Delete
⋮	Evidence	شهادة	Internal System ID	Descending	Edit Fields	Edit... Delete
⋮	Equipment	أدوات	Internal System ID	Descending	Edit Fields	Edit... Delete
⋮	Initiation System	نظام بدء	Internal System ID	Descending	Edit Fields	Edit... Delete
⋮	Components	عناصر	Internal System ID	Descending	Edit Fields	Edit... Delete

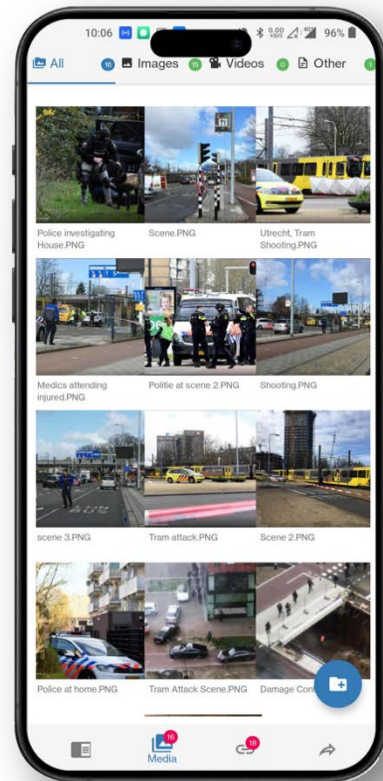
## DFUZE MOBILE OPERATOR

### EMPOWERING FIELD INTELLIGENCE WITH REAL-TIME CONNECTIVITY

Dfuze Mobile Operator, integrated with Dfuze NET, empowers Commanders with real-time intel from unfolding scenes via LTE, 5G, Wi-Fi, satellite, VPN, and APN. ISS Global's mobile solutions support Windows Mobile, iOS, Android, Windows 10, and 11, compatible with Apple iPads, Samsung Galaxy Tabs, Microsoft Surfaces, Amazon Fire HDs, Lenovo Tabs, and Huawei MatePads.

Instantly linking data to operations, it provides an ever-updating Common Operational Picture, enhancing decision-making. Operators simply take a photo, automatically transmitted with GPS to Command Control, displaying it on the Operation Map. Command can monitor real-time locations of all operatives, who can also see each other's positions.

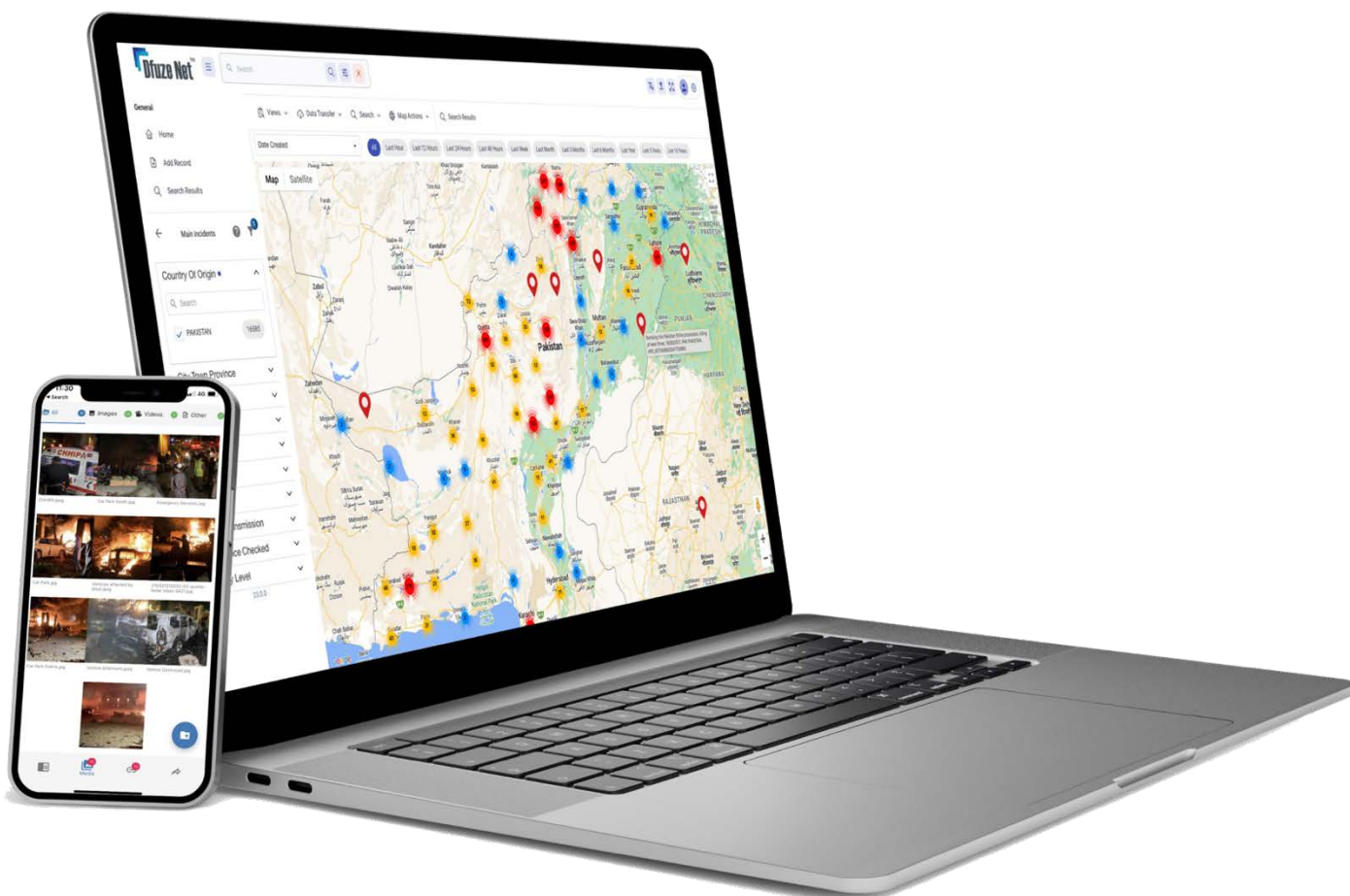
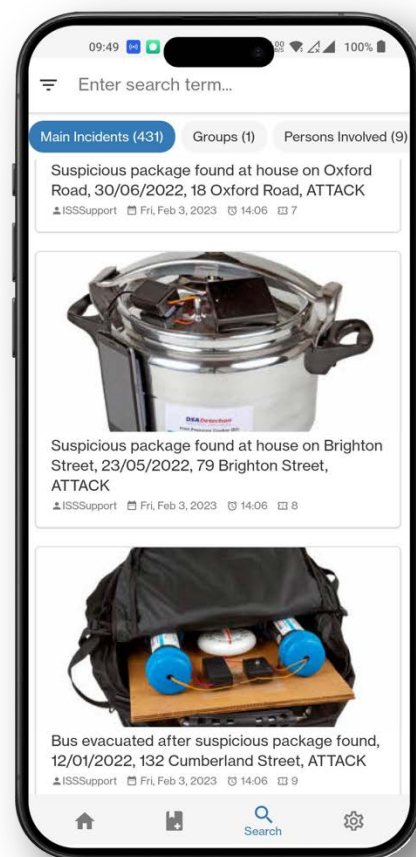
Security is paramount with multiple factor authentication, including biometrics, secure passwords, and tokens, ensuring only authorised access. ISS Global is committed to equipping personnel with vital tools and information, continuously improving based on major incident lessons and customer needs.



### MAIN FEATURES OF THE DFUZE MOBILE OPERATOR APPLICATION

- ✓ **Media Upload:**
  - Users can upload images, videos, and audio files from Dfuze Mobile into Dfuze Net, associating these files with specific incidents.
- ✓ **Upload Queue:**
  - Upload Media in a queue either in online/offline mode and upload them at a specific time/date.
- ✓ **Offline Media Storage:**
  - Users can capture media and create records even in areas without cell network coverage, with the ability to upload these files once network coverage is available.
- ✓ **Record Creation:**
  - Deployed personnel can create records for incidents, persons, locations, or objects (e.g., vehicles, cell phones) and link them to captured media files.
- ✓ **Linking Media to Incidents:**
  - Users can efficiently manage media files and objects by linking images, videos, and audio files to created incidents.

- ✓ **Secure Data Access:**
  - Users can securely access both existing Dfuze data and newly captured media files uploaded by other Dfuze Mobile users. In-The-Field Data Awareness:
  - Deployed personnel can gain immediate awareness of newly created records or recently added data in the Dfuze database.
- ✓ **Faceted Search:**
  - Users can apply multiple filters to refine their search queries.
- ✓ **Text File Search:**
  - Enables keyword searches within text-based documents in the Dfuze database.
- ✓ **Geospatial Display:**
  - Displays the locations of 'Mobile-enabled' team members on a map, enhancing situational awareness for evidence capture operations.
- ✓ **Streamlined Data Sharing:**
  - Ensures the efficient dissemination of captured data to the right people at the right time.
- ✓ **Record and Imagery Sharing:**
  - Users can share records and images with specific users and user groups.



## ➤ BENEFITS OF THE DFUZE SUITE

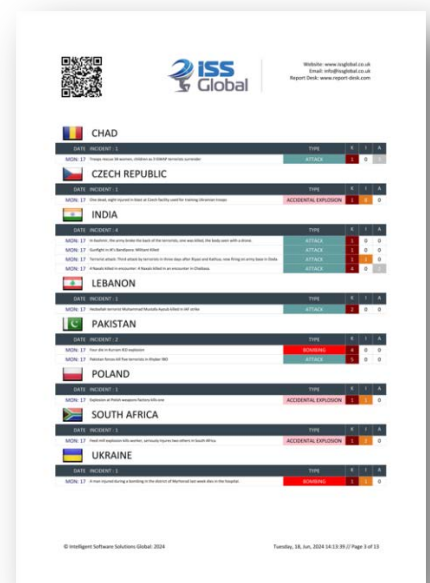
- ✓ **Enhanced Collaboration:**
  - Dfuze Net fosters collaboration between different agencies, departments, or teams, leading to more effective information sharing and decision making.
- ✓ **Improved Data Security:**
  - The platform's robust security measures protect sensitive information from unauthorised access or breaches, ensuring data privacy and integrity.
- ✓ **Streamlined Operations:**
  - Dfuze Net's scalability, customisability, and interoperability enable organisations to optimise their workflows and processes, leading to increased efficiency and productivity.
- ✓ **Data-Driven Decision Making:**
  - The platform's advanced data analysis tools provide valuable insights, enabling organisations to make informed strategic decisions that drive results.
- ✓ **Flexibility and Adaptability:**
  - Dfuze Net's agile operations enable organisations to respond quickly and effectively to changing circumstances, ensuring they stay ahead of emerging threats and technologies.
- ✓ **Competitive Advantage:**
  - Organisations that adopt Dfuze Net can gain a competitive advantage in their respective markets by leveraging the platform's features to stay ahead of the competition.
- ✓ **Improved Response Time:**
  - The platform's real-time collaboration capabilities enable organisations to respond more quickly and effectively to emerging threats or opportunities.
- ✓ **Enhanced Decision Making:**
  - Dfuze Net's data analysis tools provide valuable insights, enabling organisations to make informed decisions that drive results.
- ✓ **Reduced Costs:**
  - By streamlining operations and leveraging the platform's features, organisations can reduce costs associated with inefficient processes or unsecured data sharing practices.



## REPORT DESK (OSINT)

Report Desk improves the way organisations access and interact with open-source intelligence (OSINT). Designed for subscribers who demand up-to-the-minute information and insights, this platform offers powerful tools to keep you informed and ahead of the curve. It offers the following functional capabilities:

- ✓ **Seamless Integration with Dfuze Intelligence Management:**
  - "Report Desk" integrates directly with the Dfuze Intelligence Management system, allowing for immediate updates and insights to be fed into Dfuze, enhancing decision-making and operational awareness.
- ✓ **Automated, Tailored Reports Delivered Directly:**
  - Users can receive automated reports on specific topics or countries of interest, scheduled at their convenience, and delivered straight to their inboxes, ready for integration into the Dfuze system for comprehensive analysis.
- ✓ **Intuitive, Multilingual Dashboard for Easy Navigation:**
  - With an easy-to-use dashboard that supports multiple languages, users can effortlessly navigate through insights, making "Report Desk" accessible and efficient for global teams.
- ✓ **Real-Time Global Insights with Advanced AI Translation:**
  - Offering instant access to global data in multiple languages, "Report Desk" ensures no critical information is missed, with AI-powered translation and analysis enhancing the breadth of intelligence gathered.
- ✓ **Customisable Alerts for Immediate Information Flow:**
  - Set personalised alerts for instant notifications on relevant information, ensuring that both "Report Desk" and Dfuze Intelligence Management system users stay ahead with real-time updates.
- ✓ **Broad Spectrum of OPEN-SOURCE Data Integration:**
  - "Report Desk" scans a wide array of open sources, including social media and news outlets, ensuring comprehensive intelligence that can be directly integrated into Dfuze for a holistic view
- ✓ **Expert-curated OSINT Feeds for Quality Assurance:**
  - Benefit from feeds curated by OSINT experts, offering high-quality, relevant information that can be seamlessly integrated into the Dfuze Intelligence Management system for reliable insights.
- ✓ **Compliance and Data Privacy as a Core Feature:**
  - Built to ensure compliance with global data protection laws, "Report Desk" prioritises ethical information use and privacy, extending these principles to its integration with Dfuze Collaborative Tools for Enhanced Team Coordination:
  - Facilitate effective collaboration with features that allow teams to share insights, annotations, and analyses securely, improving intelligence sharing within Dfuze.
- ✓ **Custom Reports and Dashboards for In-depth Analysis:**
  - Generate custom reports and dashboards tailored to specific needs, allowing for efficient analysis and presentation of intelligence within the Dfuze Intelligence Management system.



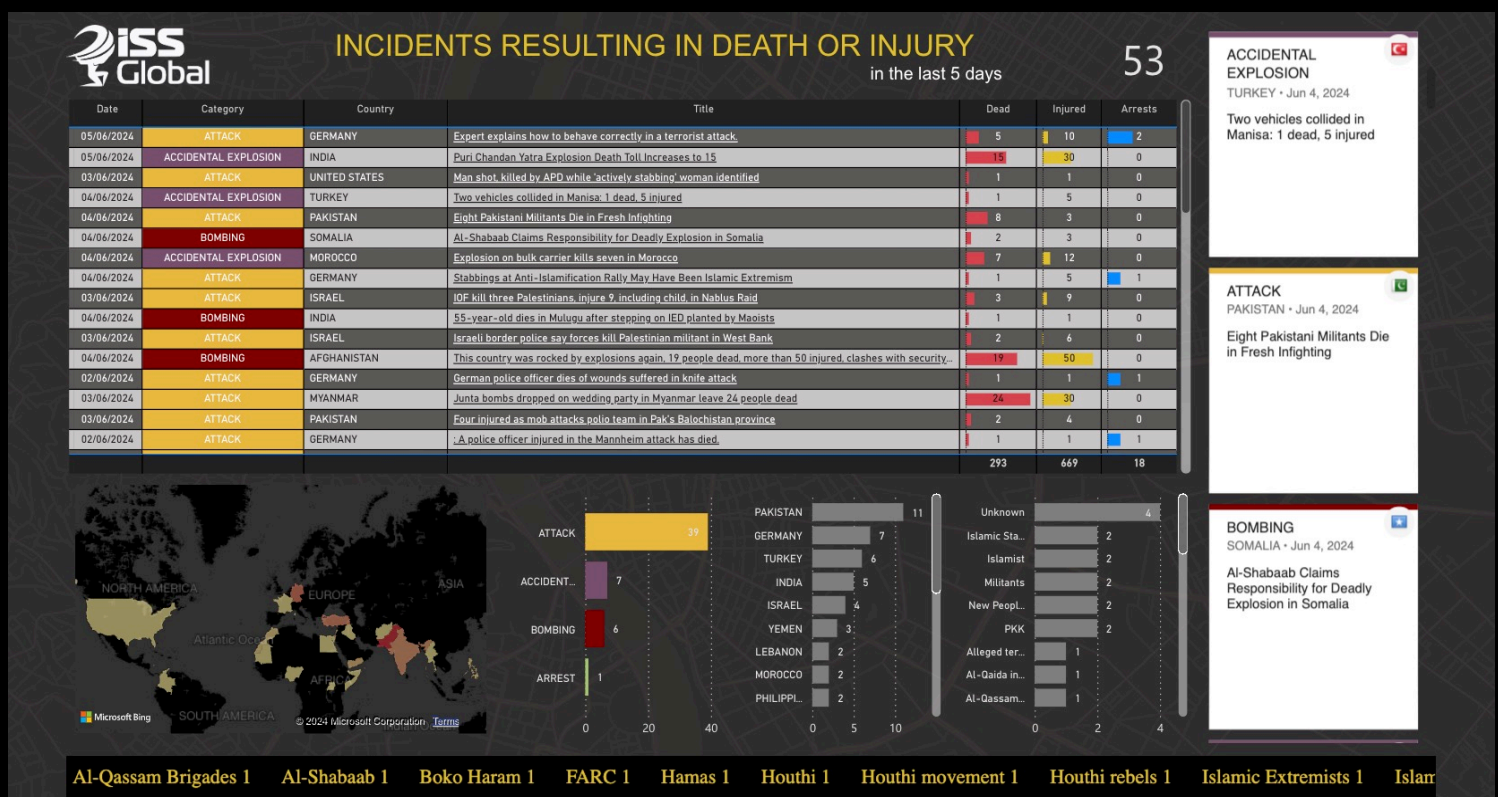
# Report Desk

Augment Your Awareness: Report Desk  
Enhances Dfuze with Open-Source Insights.

- **Benefits of OSINT:**
  - Real-Time Threat Detection
  - Global Coverage
  - Multilingual Capability
- **Key Advantages:**
  - Early Warning System
  - Data Fusion and Analysis
  - Cost-Effective Solution
- **Facilitating Collaboration:**
  - Information Sharing
  - Transparency and Accountability
- **Actionable Insights:**
  - Rapid Response
  - Risk Reduction
- **Conclusion:**
  - OSINT tool enhances global counter-terrorism efforts.



Key Add-Ons to Enhance Your Dfuze Product Suite Elevate your Dfuze product experience with our suite of add-ons, designed to extend the capabilities of our core offerings and provide you with advanced tools for security and information management:



## FORENSIC INVESTIGATIONS

- ✓ **Rapid Data Extraction:**
  - Extract data quickly from a wide range of digital devices and sources.
- ✓ **Advanced Search and Indexing:**
  - Rapidly gather and index all available content from diverse devices and sources.
  - Use advanced discovery tools to enhance search capabilities.
- ✓ **Content Understanding:**
  - Automatically identify major themes and sub-themes of content in any language.
  - Extract categorised entities to improve information relevance and speed of investigation.
- ✓ **Seamless Integration:**
  - Integrate digital content from any device or source.
  - Link other structured and unstructured data from enterprise databases, files, 3rd party organisations, the web, and other agencies.
- ✓ **Comprehensive Data Retention:**
  - Retain all potential intelligence for current and future investigations.
  - Provide automated comparison between device images and digital content.
- ✓ **Entity Association:**
  - Automatically identify associations between entities.
  - Link together all-important entities, including user-defined ones (e.g., People, Places, Organisations, Dates, Telephone Numbers, Emails, Credit Card Numbers, IBAN, Car Registrations, Drugs & Chemicals, Postcodes, Passports, Driving Licenses).
- ✓ **Efficiency and Cost-Effectiveness:**
  - Provide extraordinary savings in manpower and time.
  - Increase utility, reliability, and efficiency.
  - Allow for a scalable and actionable intelligence system using existing infrastructure.
- ✓ **Enhanced Investigative Process:**
  - Improve the speed and accuracy of the investigative process.
  - Address the increasing complexity and volume of digital forensic work.
- ✓ **Automated Analysis:**
  - Facilitate automated comparison and association of digital content across different sources.
  - Identify and highlight relevant information quickly.
- ✓ **User-Friendly Interface:**
  - Easy-to-use software environment focused on helping users understand the actual content present.
  - Allow for user-defined entity creation and management.



## DFUZE SUPPORTS AN ORGANISATION'S DATA FLOW PROCESS

---

The Dfuze Product Suite's data flow process is essential for effective information management. By minimising errors and maximising reliability, it enables informed decisions based on accurate, timely data. Additionally, it ensures compliance with data governance standards, securing sensitive information and maintaining trust, transforming complex data into actionable intelligence.

### 🔗 KEY COMPONENTS OF THE DFUZE PRODUCT SUITE DATA FLOW PROCESS

- ✓ **Data Collection:**
  - Gather data from various sources (databases, IoT, social media, documents, etc.).
- ✓ **Data Ingestion:**
  - Import data into the system with initial sorting or tagging.
- ✓ **Data Normalisation and Integration:**
  - Convert data to a common format and integrate into a unified pool.
- ✓ **Data Storage:**
  - Store data in a secure, scalable central repository.
- ✓ **Data Processing and Analysis:**
  - Use tools and algorithms for insights (mining, pattern recognition, predictive analytics).
- ✓ **Data Visualisation:**
  - Create graphical representations (charts, graphs, dashboards) for easy understanding.
- ✓ **Data Dissemination:**
  - Distribute insights and reports to stakeholders, customised to their needs.

## THE DFUZE PRODUCT SUITE REQUIREMENTS PROCESS

---

To effectively support the growing Dfuze community, we prioritise understanding our partners' needs, maintaining a clear product roadmap, and staying updated with the latest technology. Our agile approach swiftly delivers new capabilities, focusing on meaningful product enhancements.

### 🔗 DEPLOYMENT AND IMPLEMENTATION

- ✓ **Identify Stakeholders**
  - Recognise all involved parties (end-users, IT staff, etc.) and their expectations.
- ✓ **Gather and Analyse Requirements**
  - Collect requirements through surveys, consultation, and workshops.
  - Categorise and prioritise these requirements based on impact and feasibility.
- ✓ **Validate and Develop**
  - Review requirements with stakeholders and create prototypes to confirm needs.
  - Implement prioritised features in agile sprints with continuous testing.
- ✓ **Environments**
  - On Premise
  - Private Secure Cloud
  - Hosted



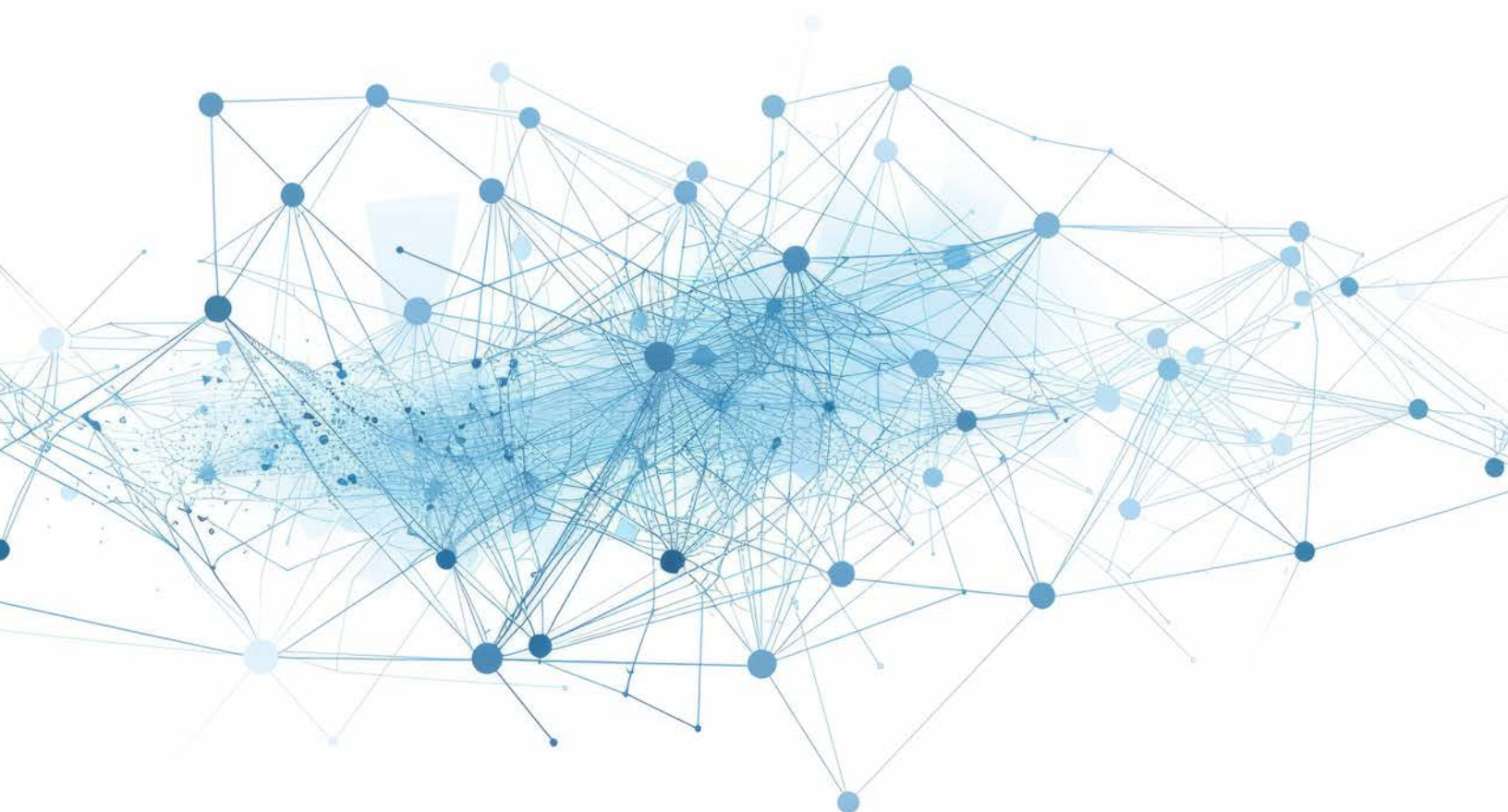
## TRAINING

- ✓ **Conduct Workshops**
  - Provide engaging, hands-on training sessions for end-users.
- ✓ **Create Training Materials**
  - Develop comprehensive user manuals, video tutorials, and FAQs.

## SUPPORT

- ✓ **Offer Ongoing Support**
  - Provide online and phone support, ensuring smooth operation and continuous improvement.
- ✓ **Maintain Feedback Loop**
  - Regularly update stakeholders and adapt to new requirements and technological advancements.
- ✓ **Annual Review**
  - Utilise annual meetings and feedback to update the product roadmap.

ISS Global customers pay an annual maintenance fee for Dfuzer software, which includes support, continuous improvement, minor enhancements, and upgrades. Key enhancement requests are assessed for feasibility and implementation.



## DFUZE PRODUCT SUITE SUCCESSES

The data collected using Dfuze products, when aggregated with data from other sources and databases, can enable analysts to rapidly become aware of trends, patterns, or individuals that have a relationship to a given incident or a series of activities.

### 🔗 CASE STUDY 1: WORLDWIDE BOMB DATA CENTRES

Since 1999, our principal product, Dfuze Net, has evolved into the de facto global standard for IED, EOD, CT, law enforcement, and private security operations, with a presence in many Bomb Data Centres throughout the world. The product's acceptance and endorsements are based on its ability to provide and promote cooperation and intelligence sharing among law enforcement, military, and anti-terrorist agencies.

The table below provides the essential Use Case information.

Use Case Identifier	Worldwide Bomb Data Centre's
<b>Description</b>	Since 1999, our principal product Dfuze Net has evolved into the de-facto global standard for IED, EOD, CT, Law enforcement and Private Security operations with a presence in many Bomb Data Centres throughout the world. The product's acceptance and endorsements are based on its ability to provide and promote co-operation and intelligence sharing among law – enforcement, military and anti-terrorist agencies.
<b>Outcomes</b>	Reports and intelligence gleaned from the data gathered worldwide can be disseminated in a consistent and standardized format across the network
<b>Steps/Variation</b>	Field operatives can capture data and instantly securely upload it from a mobile device. This makes it accessible to the centre and other operatives to assist in the identification of componentry/methods of operation etc.
<b>Users</b>	Worldwide Law Enforcement/Military. Field Operatives to gather the data, analysts/report writers to disseminate
<b>Preconditions</b>	All operatives can communicate electronically through IT systems that are compatible and have the correct security classifications in the field in which they are operating.
<b>Supporting C-IED Data</b>	Imagery (still and moving), field reports, Bomb Data Centre incident reports, EOD, WIT, CEXC and TEDAC reports, databases of previous incidents and devices

🔗 CASE STUDY 2: NETHERLANDS FORENSIC INSTITUTE (NFI)

In 2011, Dfuze Net was adopted as the national system for the NFI, providing the ability to store big data from both the forensic and the EOD team. The EOD team captures data at the scene and uploads near-real-time media to the NFI to enable rapid examination of the materials collected.

The table below provides the essential Use Case information.

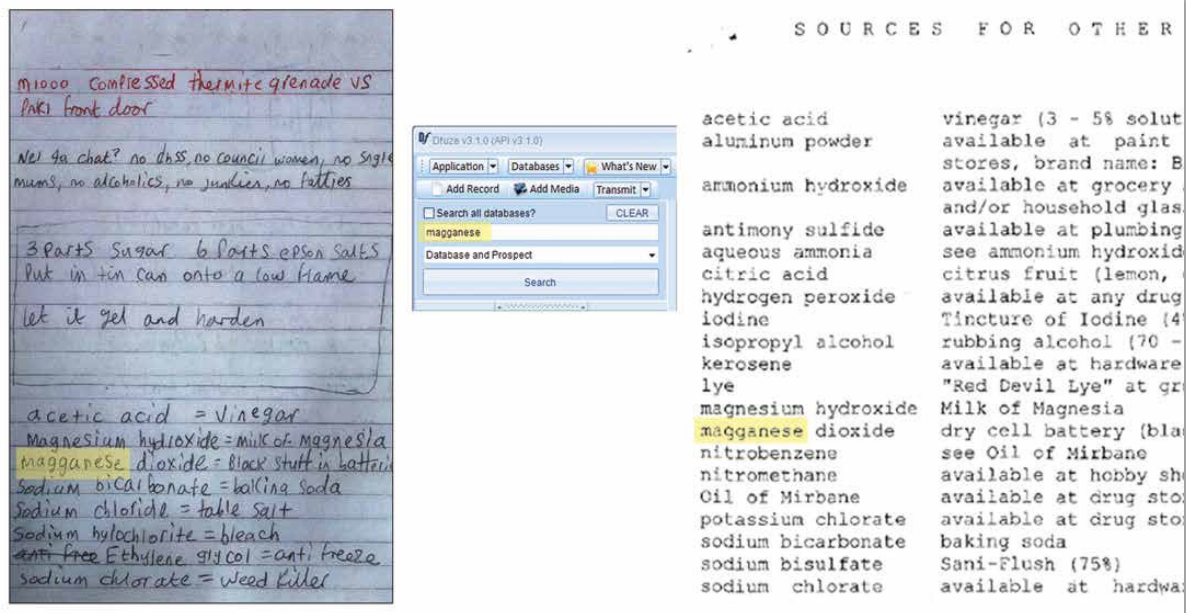
Use Case Identifier	Netherlands Forensic Institute (NFI)
Description	In 2011, Dfuze was adopted as the national system for the NFI providing the ability to store big data from both the forensic and the EOD team. The EOD team capture data at the scene and upload near real time media to the NFI to enable rapid examination of the materials collected.
Outcomes	Fast time analysis of the data gathered is made by qualified personnel at the National Forensic Institute, enabling the correct information to be disseminated out in a timely manner
Steps/Variation	EOD operators at the scene have the ability to capture data and instantly and securely upload it to their own centralised database utilising a variety of mobile devices.
Users	EOD operators, scientific personnel, forensic examiners, researchers, analysts and report writers
Preconditions	With the correct security classifications in place, operators are able to communicate quickly and reliably with the centre, enabling the correct information to be disseminated in near-real time
Supporting C-IED Data	Previous Scientific reports created within the system, details of componentry, make-up of devices, historical reports



## 🔍 CASE STUDY 3: INVESTIGATION

1. As a result of an incident, a male was found in possession of two viable timed IEDs. The investigation focused on potential targets. The suspect had no electronic media but was found in possession of handwritten notebooks containing explosive recipes. One such recipe mentioned the misspelt chemical 'magganese dioxide'. A search was made in the Dfuze Intelligence Management System that resulted in an exact match to the misspelt word.

It was discovered that this had originated from a terrorist manual. It was later proved that the male had carried out research at a local internet cafe and had copied the recipe, including the misspelling. Upon conviction he was sentenced to life imprisonment.



**Handwritten Recipe:**

10000 compressed thermite grenade vs  
Paki front door

Net 40 chat? no dross, no council women, no single  
mums, no alcoholics, no junkies, no fatties

3 parts Sugar 6 parts epsom salts  
Put in tin can onto a low flame  
let it gel and harden

acetic acid = vinegar  
Magnesium hydroxide = milk of magnesia  
magganese dioxide = black stuff in battery  
sodium bicarbonate = baking soda  
sodium chloride = table salt  
sodium hypochlorite = bleach  
anti-freeze Ethylene glycol = anti-freeze  
sodium chlorate = weed killer

**SOURCES FOR OTHER**

acetic acid	vinegar (3 - 5% solution)
aluminum powder	available at paint stores, brand name: B
ammonium hydroxide	available at grocery and/or household glass
antimony sulfide	available at plumbing
aqueous ammonia	see ammonium hydroxide
citric acid	citrus fruit (lemon)
hydrogen peroxide	available at any drug
iodine	Tincture of Iodine (4%)
isopropyl alcohol	rubbing alcohol (70 - 90%)
kerosene	available at hardware
lye	"Red Devil Lye" at grocery
magnesium hydroxide	Milk of Magnesia
magganese dioxide	dry cell battery (black stuff)
nitrobenzene	see Oil of Mirbane
nitromethane	available at hobby shop
Oil of Mirbane	available at drug store
potassium chlorate	available at drug store
sodium bicarbonate	baking soda
sodium bisulfate	Sani-Flush (75%)
sodium chlorate	available at hardware

**Dfuze V3.1.0 (API V3.1.0)**

Application: Databases: What's New:

Add Record Add Media Transmit

Search all databases? CLEAR

Database and Prospect

Search

2. In the aftermath of a bombing, investigators were recovering debris from the scene looking for evidence of the IED (Improvised Explosive Device) used in the attack. Small fragments of blast damaged plastic were found, that upon closer inspection showed embossed lettering and numbers. The details were entered into the Dfuze Intelligence Management System which instantly returned a match. The results showed that the item found at the scene contained identical markings to a 9-volt battery holder listed in the Power Source database within the system.

This gave the investigators a strong indication that the power source for the IED's TPU (Time and Power Unit) had utilised the same 9 Volt battery holder.

During investigations of further incidents, the same 9-Volt battery holder was found to be used in other TPUs.



## ISS GLOBAL - A TRUSTED PARTNER

ISS Global leverages its extensive market experience to create solutions that precisely meet customer requirements. With the expertise of our staff and partners, we deliver out-of-the-box solutions that are fit for purpose and adaptable to emerging needs.

Our success is not just about engineering solutions; it is about understanding the operational environments of organisations and communities. The evolution of the Dfuze product suite is driven by our partnerships and the invaluable input from our subject matter experts (SMEs). With an average of over 20 years of operational experience, our SMEs understand the demands and constraints that organisations face, ensuring our solutions meet today's requirements and tomorrow's challenges.

Our robust, user-centric solutions, developed with direct client input, are why organisations choose us. As they face their toughest challenges and their needs evolve, they continue to partner with us for reliable, forward-thinking solutions.

### Discover why we're the leading solutions provider

Feature	Details
<b>Robust Security Measures</b>	Data Protection: Implementing security measures, compliance with GDPR, HIPAA, SOC 2, MOPI.
<b>Proven Expertise and Reliability</b>	Technical Proficiency: Knowledge in information management, reliability.
<b>Customisable and Scalable Solutions</b>	Adaptability: Tailored solutions, scalable. Integration Capability: Seamless integration with existing systems.
<b>Exceptional Customer Support</b>	Responsive Support: Timely customer support. Resource Availability: User manuals, training, online help.
<b>Transparent and Ethical Practices</b>	Clear Communication: Open communication about updates, policies, pricing. Ethical Conduct: High standards of ethics and integrity.
<b>Innovative Approach</b>	Continuous Improvement: Updating products with latest technologies. Innovation Leadership: New solutions for market needs.
<b>Strong Track Record</b>	Customer Testimonials and Case Studies: Portfolio of successful implementations.
<b>Partnerships and Alliances</b>	Strategic Alliances: Alliances with technology providers. Community Engagement: Participation in forums, workshops, conferences.
<b>Comprehensive Training and Documentation</b>	User Education: Training sessions and documentation for customers.

## NOTES

NOTES

---




#### CONTACT NUMBERS

Type	Number
Main	+44 207 060 9730

#### EMAIL ADDRESSES

Department	Email
General Enquiries	<a href="mailto:info@issglobal.co.uk">info@issglobal.co.uk</a>
Customer Support	<a href="mailto:support@issglobal.co.uk">support@issglobal.co.uk</a>
Sales Department	<a href="mailto:sales@issglobal.co.uk">sales@issglobal.co.uk</a>

Innovation House  
Innovation Way  
Discovery Park  
Sandwich  
Kent  
England  
CT13 9FF



[www.issglobal.co.uk](http://www.issglobal.co.uk)